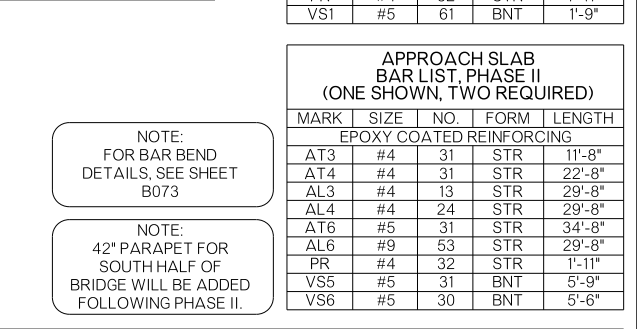
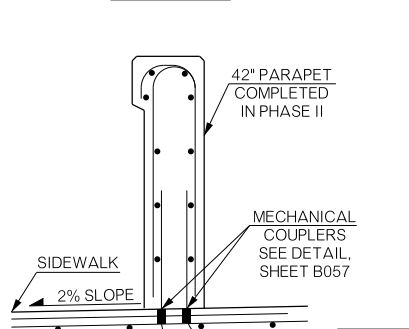
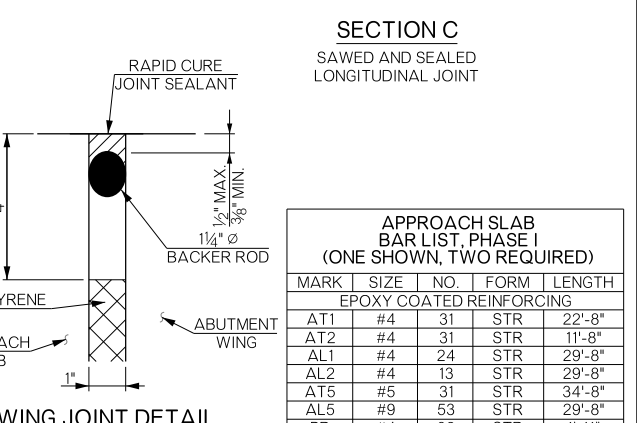
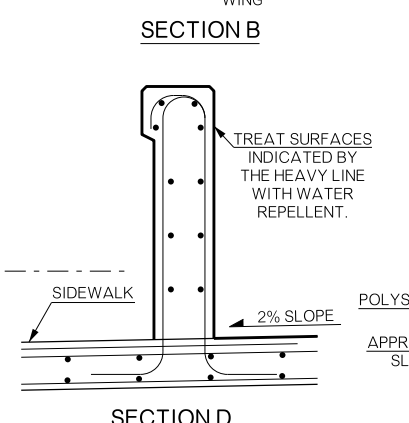
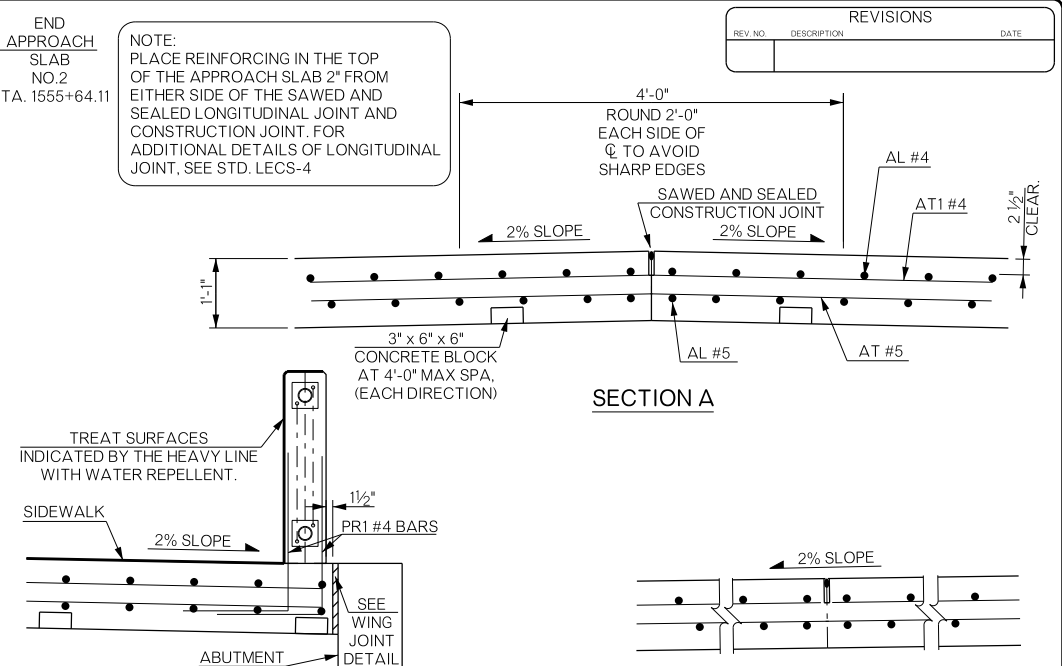
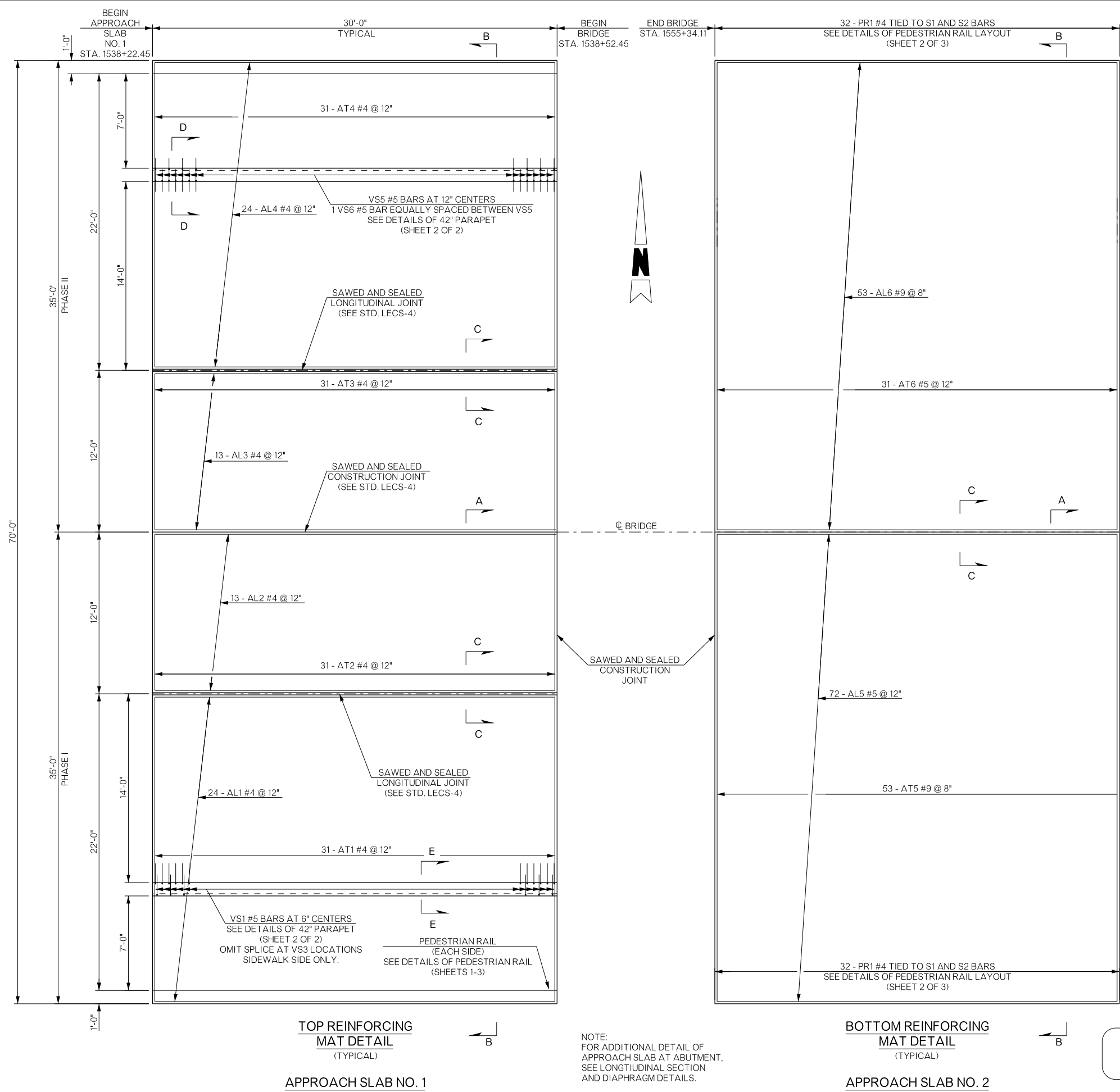


REVISIONS		
REV. NO.	DESCRIPTION	DATE



APPROACH SLAB BAR LIST, PHASE I (ONE SHOWN, TWO REQUIRED)

MARK	SIZE	NO.	FORM	LENGTH
EPOXY COATED REINFORCING				
AT1	#4	31	STR	22'-8"
AT2	#4	31	STR	11'-8"
AL1	#4	24	STR	29'-8"
AL2	#4	13	STR	29'-8"
AT5	#5	31	STR	34'-8"
AL5	#9	53	STR	29'-8"
PR	#4	32	STR	1'-11"
VS1	#5	61	BNT	1'-9"

APPROACH SLAB BAR LIST, PHASE II (ONE SHOWN, TWO REQUIRED)

MARK	SIZE	NO.	FORM	LENGTH
EPOXY COATED REINFORCING				
AT3	#4	31	STR	11'-8"
AT4	#4	31	STR	22'-8"
AL3	#4	13	STR	29'-8"
AL4	#4	24	STR	29'-8"
AT6	#5	31	STR	34'-8"
AL6	#9	53	STR	29'-8"
PR	#4	32	STR	1'-11"
VS5	#5	31	BNT	5'-9"
VS6	#5	30	BNT	5'-6"

APPROACH SLAB QUANTITIES ONE SHOWN, TWO REQUIRED

ITEM	UNIT	APPROACH SLAB PHASE I	APPROACH SLAB PHASE II	TOTAL
APPROACH SLAB	S.Y.	116.7	116.7	233.34
SAW-CUT GROOVING	S.Y.	186.8	186.8	373.6
WATER REPELLENT (VISUALLY INSPECTED)	S.Y.	87.0	87.0	168.6
CONCRETE PARAPET	L.F.	0.0	60.0	60.0
(PL) CONCRETE PARAPET (HANDRAIL TYPE)	L.F.	30.0	30.0	60.0

① THE DEPARTMENT CONSIDERS THE COST OF CONCRETE, REINFORCING STEEL (INCLUDING PR BARS), BACKER ROD, RAPID CURE JOINT SEALANT, POLYSTYRENE AND POLYETHYLENE SHEETING TO BE INCLUDED IN THE CONTRACT UNIT PRICE OF APPROACH SLAB. THERE IS A TOTAL ESTIMATED 116.7 C.Y. OF CLASS "AA" CONCRETE AND A TOTAL ESTIMATED 16,374 LB. OF EPOXY COATED STEEL IN EACH COMPLETED APPROACH SLAB.

BRIDGE "A" SH-33 OVER COTTONWOOD CREEK		LOGAN COUNTY	
Design	GT	11/15	
Detail	DT	9/15	
Check			
Squad: PEARSON Engr: HERNANDEZ			
STATE OF OKLAHOMA		DEPARTMENT OF TRANSPORTATION	
JOB/PIECE NO.	21860(04)	SHEET NO.	B077

NOTE: FOR ADDITIONAL DETAIL OF APPROACH SLAB AT ABUTMENT, SEE LONGITUDINAL SECTION AND DIAPHRAGM DETAILS.

NOTE: FOR ADDITIONAL DETAILS SEE PEDESTRIAN RAIL, (SHEETS B070-B072)

INFORMATION SHOWN ON THIS SHEET IS APPLICABLE ONLY WITH ASPHALT ROADWAY